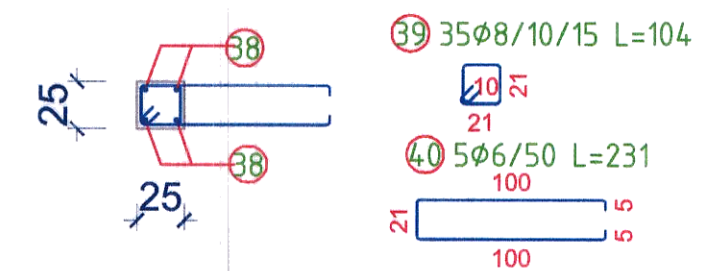
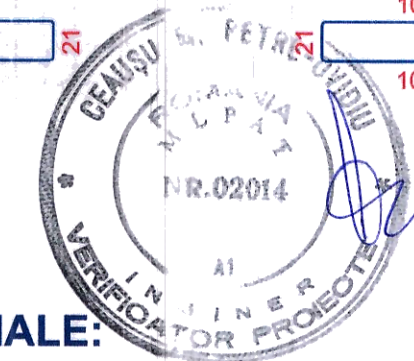
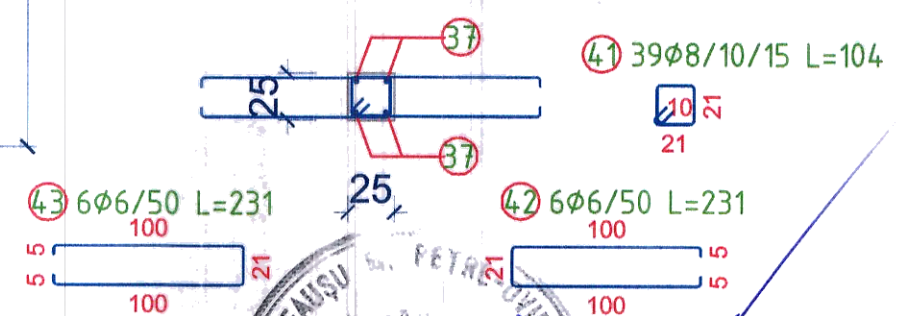


S4 (25x25 cm)
- sectiune -



S3 (25x25 cm)
- sectiune -



MATERIALE:
- Beton:

- C16/20 in stalpi, centuri.
- Otel beton:
- PC52, OB37.

CLASA BETON
C16/20 XC1 CEM II A-S 32.5R(min. 260kg/mc) A/C:0.60

POSITION	N. BARS	Ø [mm]	L [cm]	TOT L. [m]	WEIGHT [kg]	CODE	PATTERN [cm] (to the ext. boundary)
37	4	14	462.0	18.48	22.32	212	15 432 15
38	4	14	408.0	16.32	19.71	212	15 378 15
39	35	8	104.0	36.40	14.38	595	21 21
40	5	6	231.0	11.55	2.56	454	21 100 55
41	39	8	104.0	40.56	16.02	595	21 21
42	6	6	231.0	13.86	3.08	454	21 100 55
43	6	6	231.0	13.86	3.08	414	55 100 21
TOTAL WEIGHT:					81.15		

S.C. ARHIAMA STRUCTURI DESIGN S.R.L.			Beneficiar : SPITALUL DE RECUPERARE BRADET		Pr: 138
PROIECTAT ing. Gheorghe PINTILIE			Proiect CONSTRUCTIE SALA VESTIARE PERSONAL SI CIRCUIT SEPARARE TRANSPORT LENJERIE		Data : 2022
DESENAT ing. Gheorghe PINTILIE			COMUNA BRADULET, SAT BRADETU, JUD. ARGES		Pl. nr: R16r1
			Stalpi 25x25cm - vedere 2-2		Scara: